

HOW TO ANNEX AN AREA INTO INTERCITY TRANSIT'S PUBLIC TRANSPORTATION BENEFIT AREA (PTBA)

**Intercity Transit Authority (ITA)
initiates process**

(Page 1.1 – 1.2)

Citizens initiate process

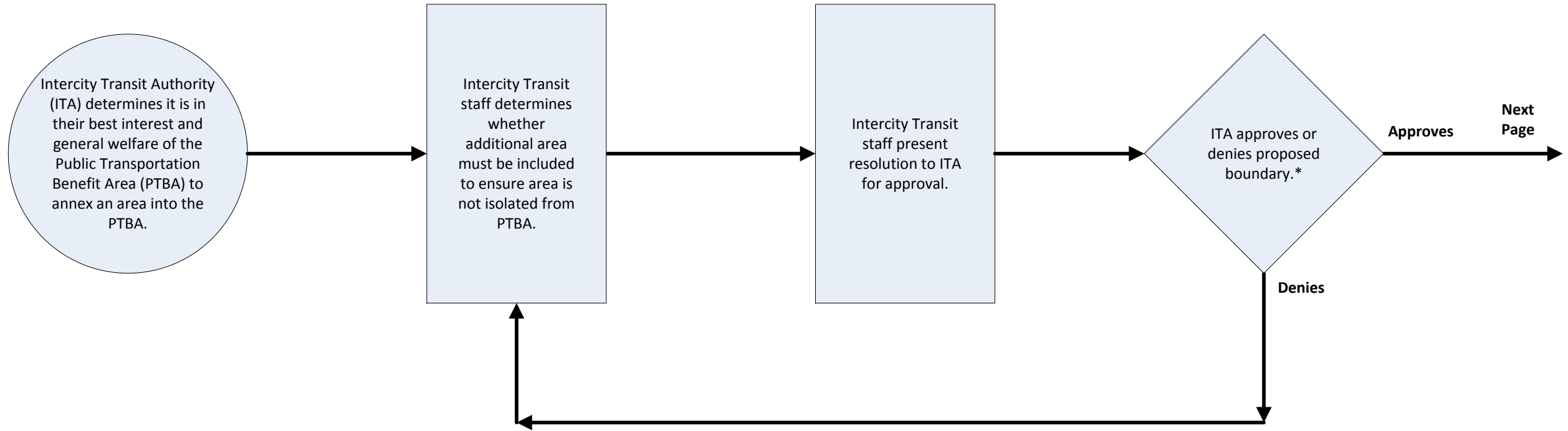
(Page 2.1 – 2.2)

Municipality initiates process

(Page 3.1 – 3.2)

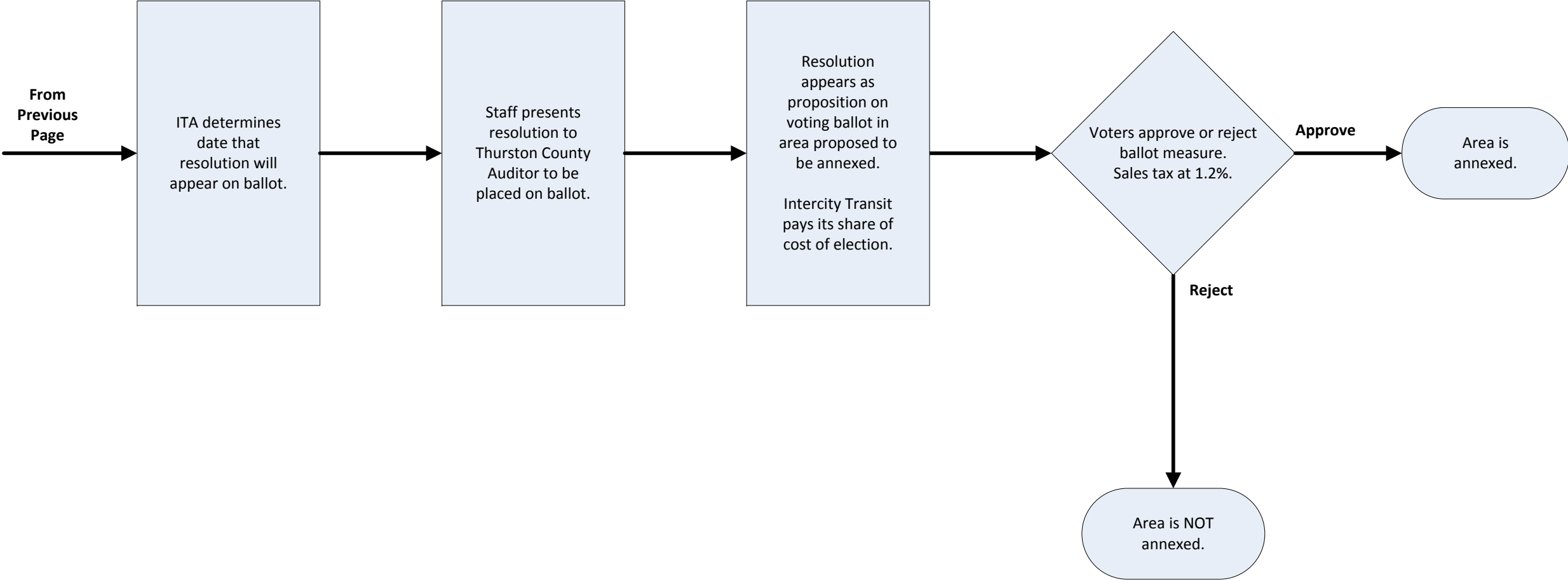
THREE OPTIONS

INTERCITY TRANSIT AUTHORITY INITIATES ANNEXATION

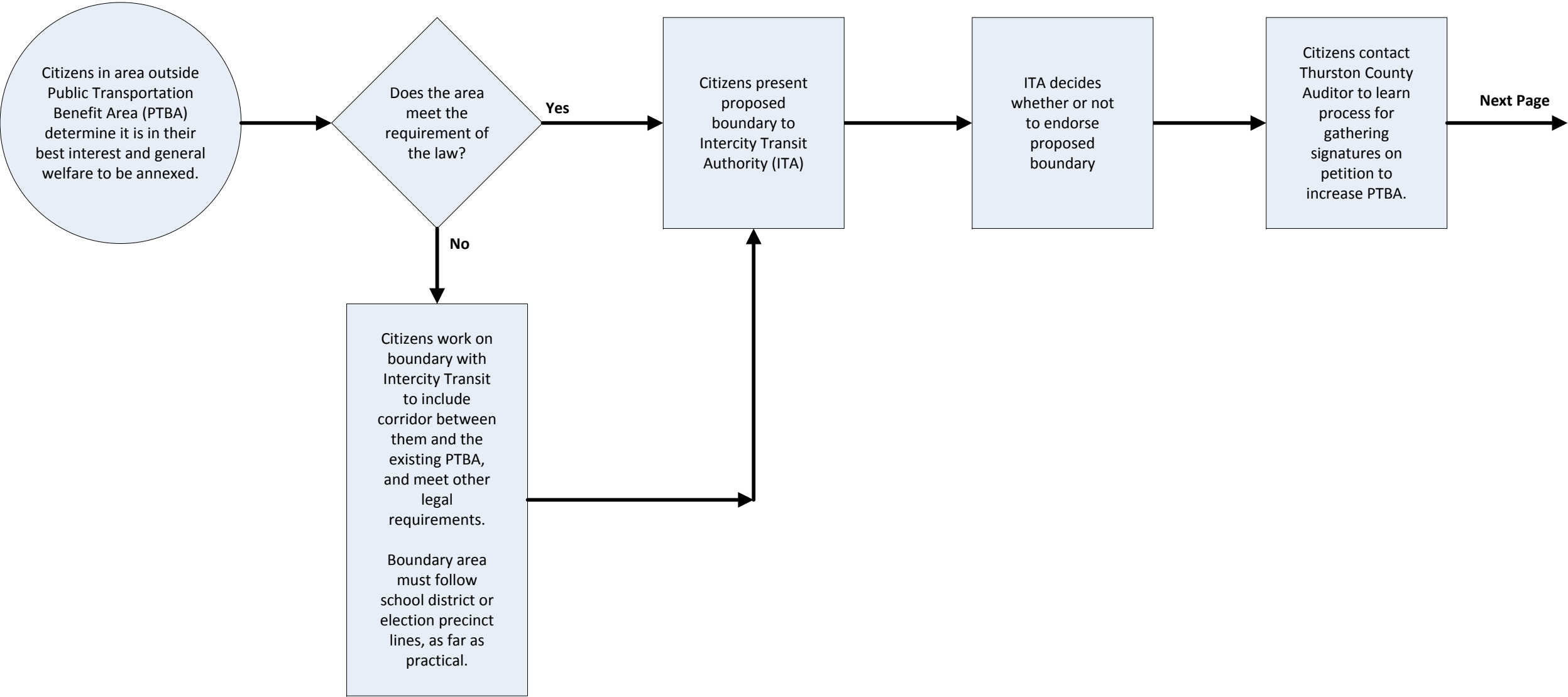


*The ITA must determine that the annexation is in the best interest and general welfare of the PTBA (RCW 36.57A.140(a)).

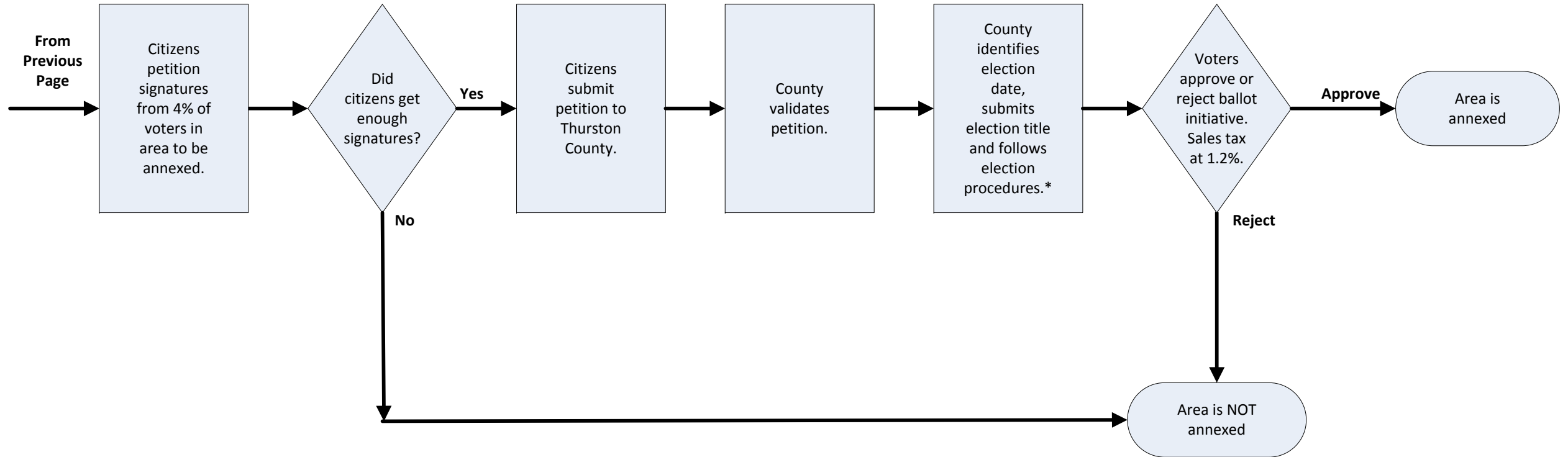
INTERCITY TRANSIT AUTHORITY INITIATES ANNEXATION



CITIZENS INITIATE ANNEXATION

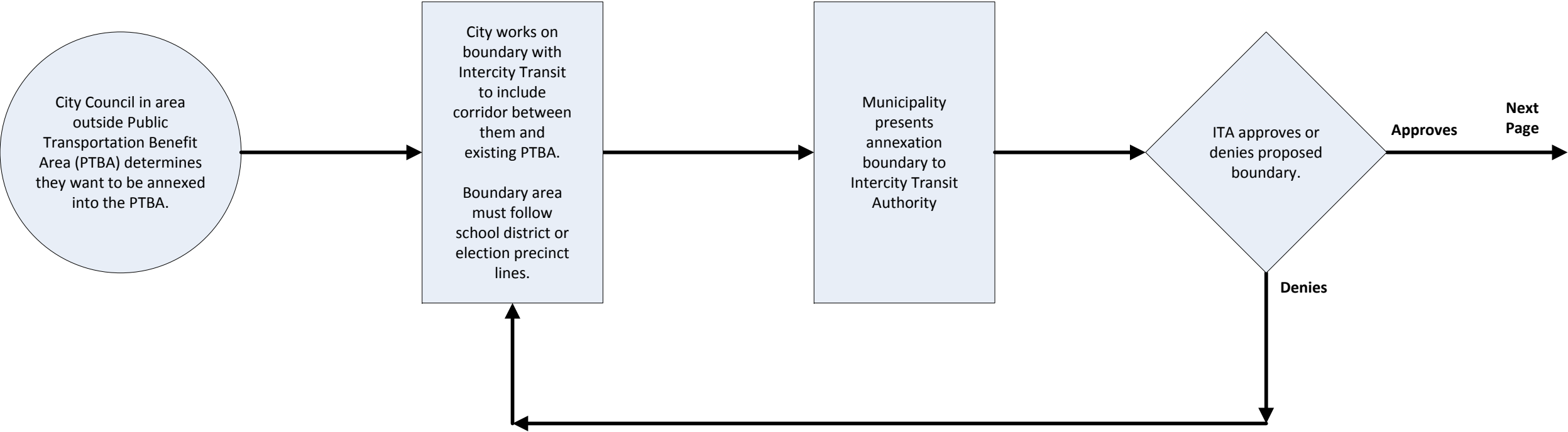


CITIZENS INITIATE ANNEXATION

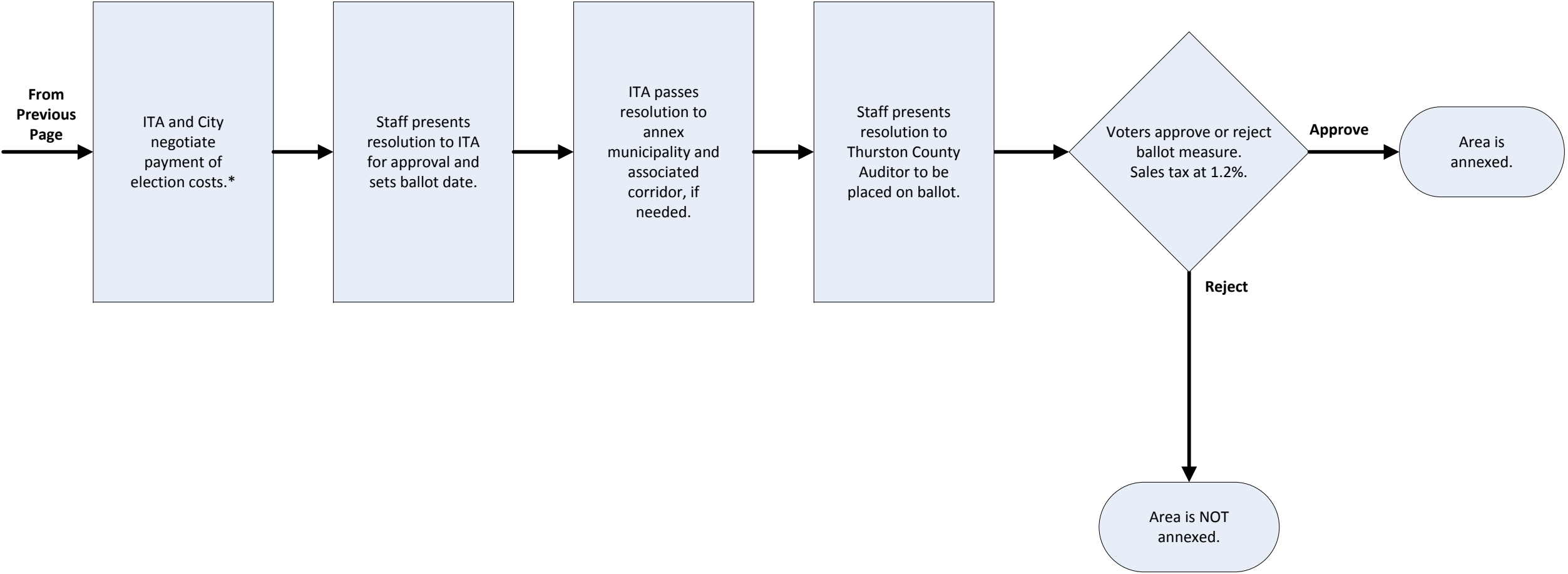


*County pays for election.

MUNICIPALITY INITIATES ANNEXATION



MUNICIPALITY INITIATES ANNEXATION



*Election Cost Options:
1. City pays for all election costs.
2. City and ITA share election costs.
3. ITA pays for all election costs.