

**Bid Addendum No. 1 for:**  
**INTERCITY TRANSIT**  
**OLYMPIA TRANSIT CENTER NORTH SITE IMPROVEMENTS**  
**PROJECT #2237**

To: All Prospective Bidders

From: Whitney Holm, PE

RE: INTERCITY TRANSIT – OLYMPIA TRANSIT CENTER NORTH SITE IMPROVEMENTS PROJECT #2237

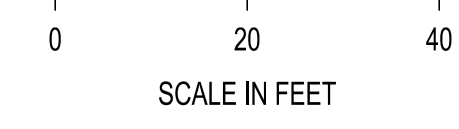
All Bidders are required to make the following substitutions to the Bid Documents. Below is a description of the revisions made to the Contract Documents. This Addendum takes precedence in resolving inconsistencies in any parts of the contract documents. Bidders are hereby notified that the documents have been amended as follows:

**Plans:**

Onsite Plans

- Sheet C-102:
  - Updated design to help with ponding outside bike locker by adding a trench drain along the concrete sidewalk and connecting to the proposed catch basin.
  - Remove and replace sidewalk to connect new catch basin to existing storm line.
  
- Sheet C-103:
  - Updated Cement Concrete Pavement Detail.

SEC. 14, T18N., R2W., W.M.



LEGEND

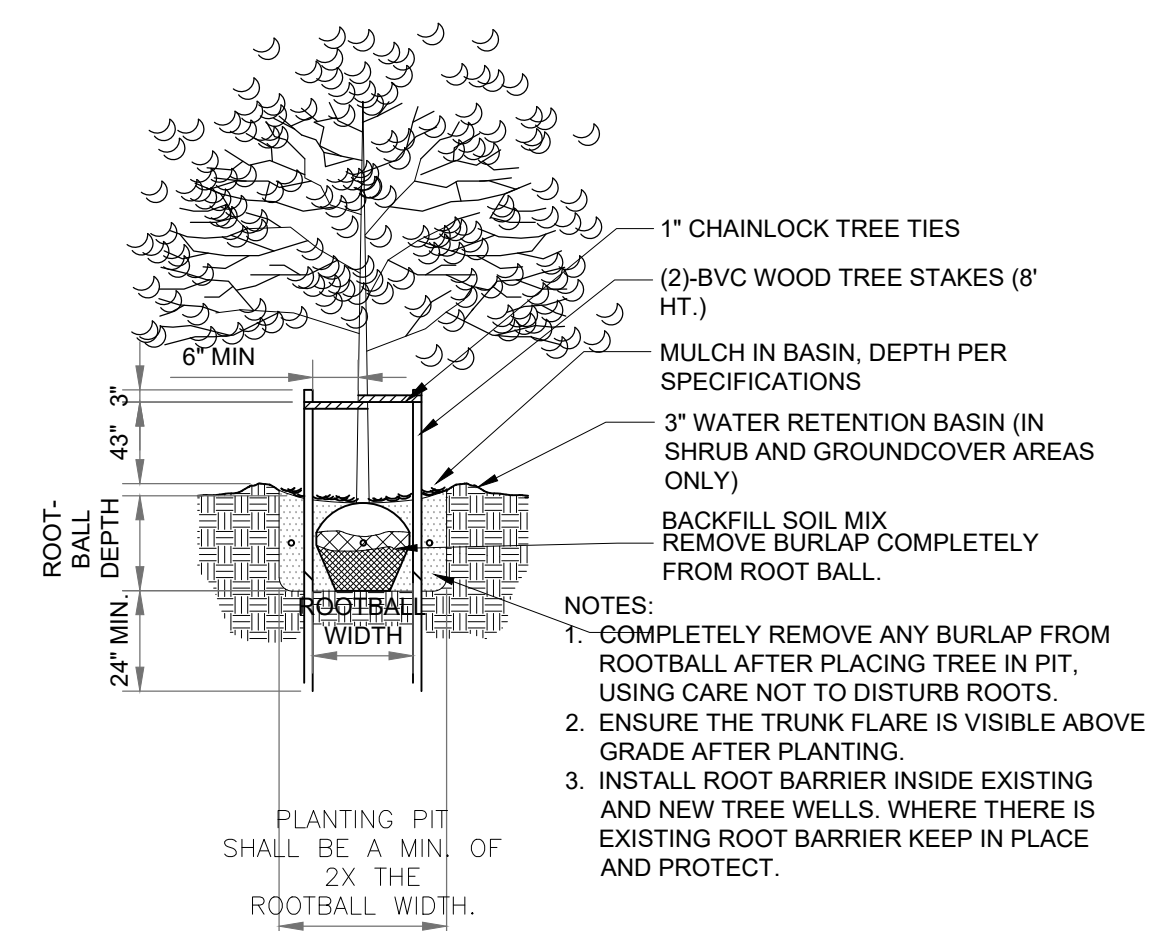
- CEMENT CONCRETE TRAFFIC CURB  
SEE WSDOT STD. PLAN F-10.12-04 ON SHEET C-104
- CONCRETE SIDEWALK: SEE CITY OF OLYMPIA STD. DWG. 4-9C AND CONTROL JOINT DETAIL ON SHEET C-104
- ASPHALT PAVEMENT RESTORATION  
SEE CITY OF OLYMPIA STD. DWG. 4-8A ON SHEET C-104
- CEMENT CONCRETE PAVEMENT. SEE DETAIL ON SHEET C-103
- PROPOSED TREE TO BE ADDED PER NOTES AND DETAIL

GENERAL NOTES:

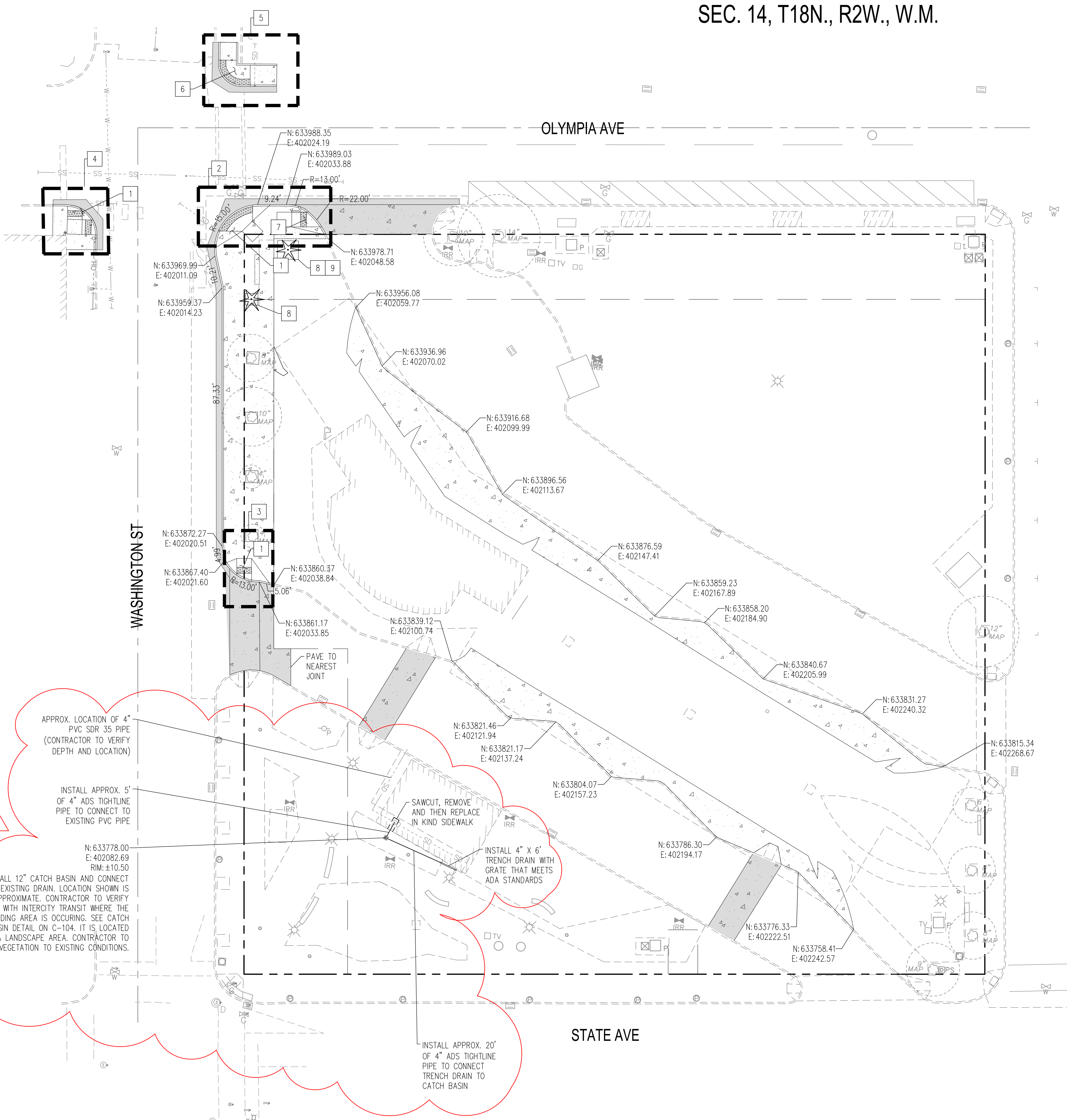
1. GRUB OUT AND REMOVE (BY ANY NON-MECHANICAL MEANS WITHIN DRIPLINE OF EXISTING TREES) ALL INVASIVE AND NON-NATIVE SPECIES IN TREE TRACT AREAS. CONTACT PROJECT FORESTER PRIOR TO REMOVAL OF INVASIVE PLANTS TO DETERMINE THE PROPER METHOD OF REMOVAL
2. ALL TREE SUBSTITUTIONS SHALL BE APPROVED BY CITY FORESTER
3. ALL TREES ARE TO BE INSPECTED BY PROJECT FORESTER PRIOR TO PLANTING AND POST PLANTING. INSPECTION REPORT WILL BE REVIEWED AND APPROVED/DENIED BY CITY FORESTER

CONSTRUCTION NOTES:

1. PERPENDICULAR CURB RAMP: SEE CITY OF OLYMPIA STD. DWG. 4-12C ON SHEET C-104
2. ADA RAMP 1 & 2 ENLARGEMENT: SEE C-103
3. ADA RAMP 3 ENLARGEMENT: SEE C-103
4. ADA RAMP 4 ENLARGEMENT: SEE C-103
5. ADA RAMP 5 ENLARGEMENT: SEE C-103
6. PARALLEL CURB RAMP: SEE CITY OF OLYMPIA STD. DWG. 4-12D ON SHEET C-104
7. COMBINED PERPENDICULAR AND SINGLE DIRECTION CURB RAMP. SEE CITY OF OLYMPIA STD DWG. 4-12C AND 4-12G1&2
8. PLANT A 2" CAL. - ZELKOVA SERRATA "GREEN VASE" 12'-14' SEE PLANTING DETAIL ON THIS SHEET
9. INSTALL TREE WELL IN SAME LOCATION AS THE EXISTING BIKE STORAGE BOX THAT IS BEING REMOVED



01 TREE PLANTING & STAKING DETAIL  
N.T.S.



APPROX. LOCATION OF 4" PVC SDR 35 PIPE (CONTRACTOR TO VERIFY DEPTH AND LOCATION)

INSTALL APPROX. 5' OF 4" ADS TIGHTLINE PIPE TO CONNECT TO EXISTING PVC PIPE

INSTALL 12" CATCH BASIN AND CONNECT TO EXISTING DRAIN. LOCATION SHOWN IS APPROXIMATE. CONTRACTOR TO VERIFY WITH INTERCITY TRANSIT WHERE THE PONDING AREA IS OCCURRING. SEE CATCH BASIN DETAIL ON C-104. IT IS LOCATED IN A LANDSCAPE AREA. CONTRACTOR TO RESTORE VEGETATION TO EXISTING CONDITIONS.

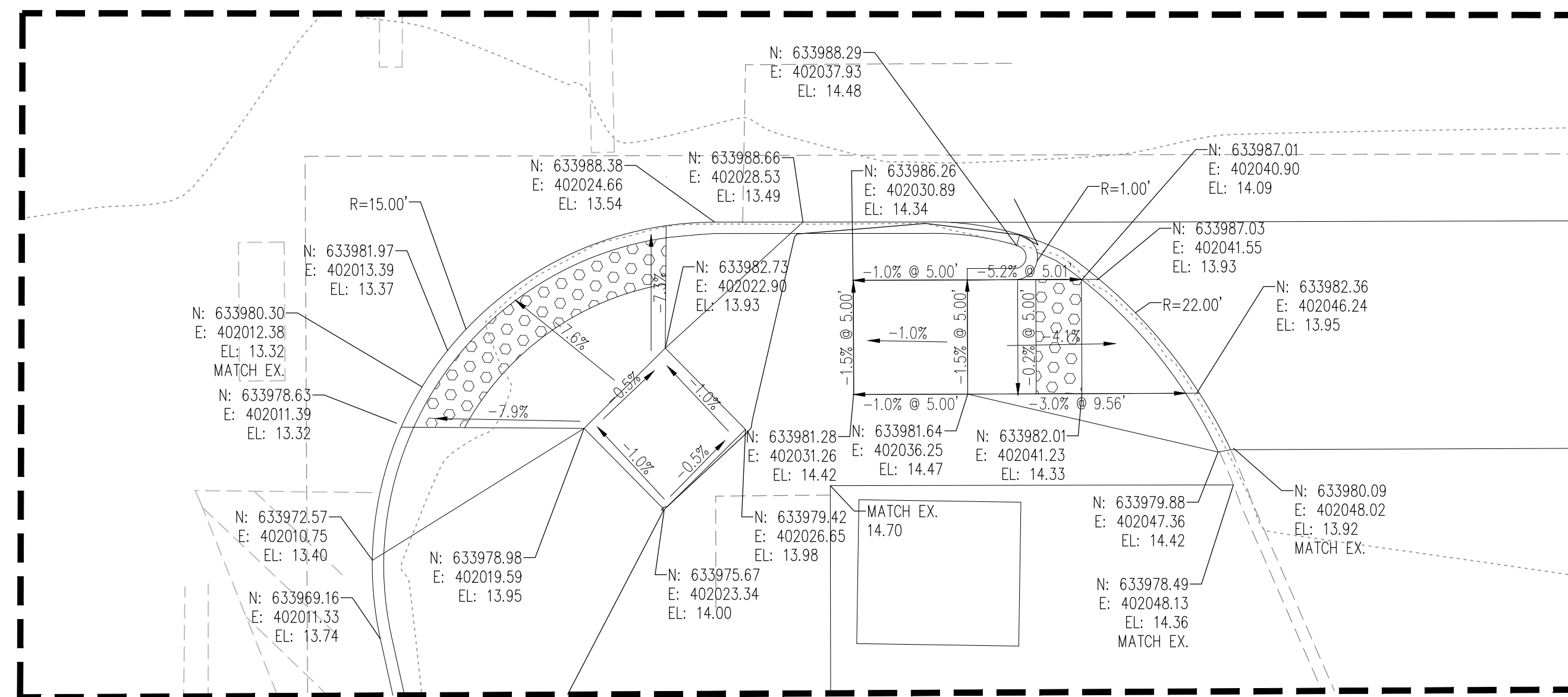
INSTALL APPROX. 20' OF 4" ADS TIGHTLINE PIPE TO CONNECT TRENCH DRAIN TO CATCH BASIN

SAWCUT, REMOVE AND THEN REPLACE IN KIND SIDEWALK

INSTALL 4" X 6" TRENCH DRAIN WITH GRATE THAT MEETS ADA STANDARDS

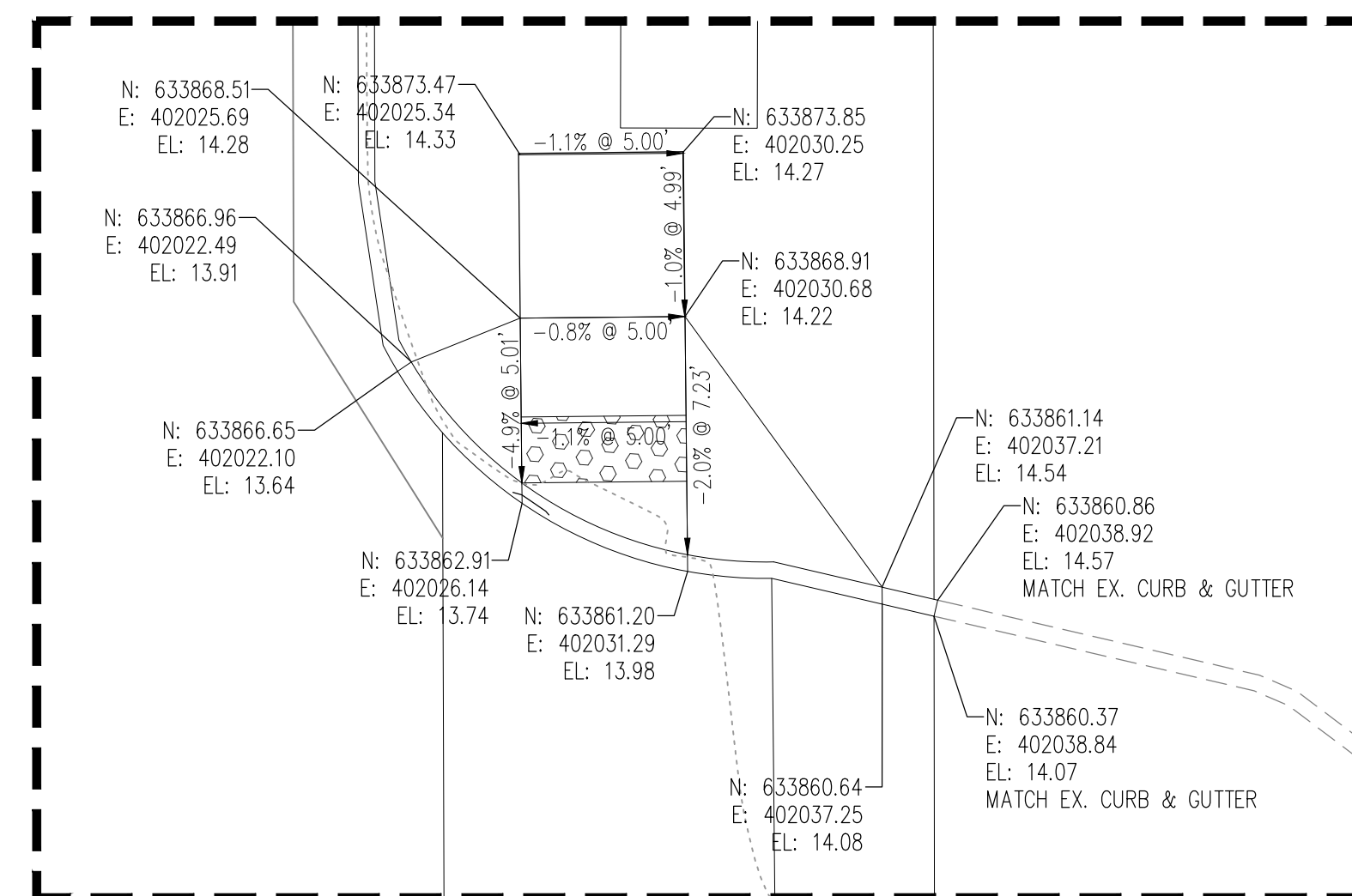
**CALL BEFORE YOU DIG**  
THE CONTRACTOR SHALL BE FULLY RESPONSIBLE FOR THE LOCATION AND PROTECTION OF ALL EXISTING UTILITIES. THE CONTRACTOR SHALL VERIFY ALL UTILITY LOCATIONS PRIOR TO CONSTRUCTION BY CALLING THE UNDERGROUND LOCATE LINE AT 811 OR (800) 424-5555 A MINIMUM OF 48 HOURS PRIOR TO ANY EXCAVATION.

BY	RM
DATE	8/9/2023
REVISIONS	1 ADDENDUM NO. 1
 <b>SCJ ALLIANCE</b> CONSULTING SERVICES 8730 TALLON LANE NE, SUITE 200, LACEY, WA 98516 P: 360.352.1465 SCJALLIANCE.COM	
<b>SITE IMPROVEMENT PLAN</b> OLYMPIA TRANSIT CENTER NORTH SITE IMPROVEMENTS OLYMPIA, WA	
SEAL:	
DESIGNER:	K. GANS
DRAWN BY:	K. GANS
APPROVED BY:	W. HOLM
DATE:	JULY, 2023
JOB NO:	22-000842
DRAWING FILE NO:	22-000842_SP-01
DRAWING NO:	C-102
SHEET NO:	6 OF 9



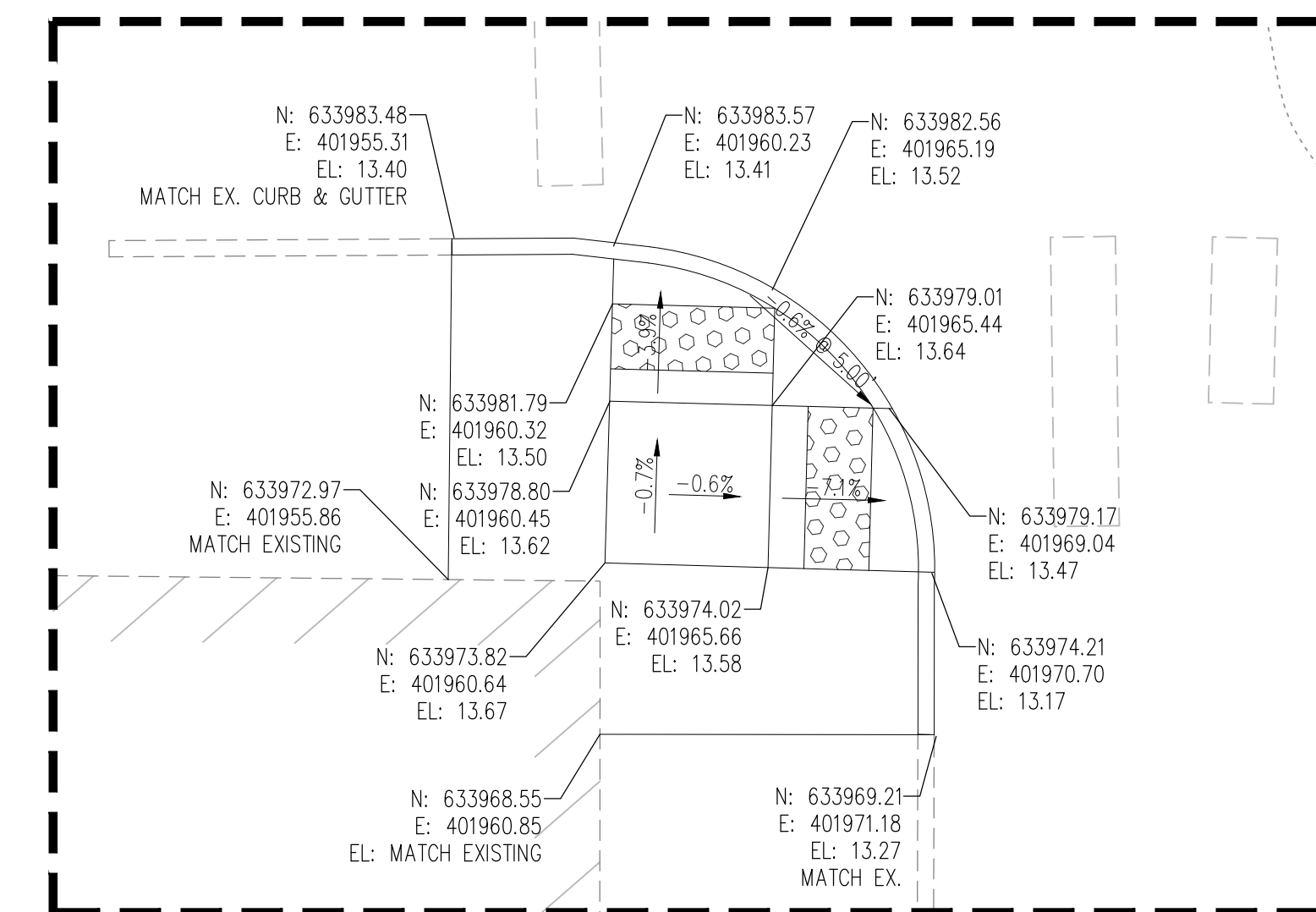
ADA RAMPS 1 & 2 ENLARGEMENT

1" = 5'



ADA RAMP 3 ENLARGEMENT

1" = 5'

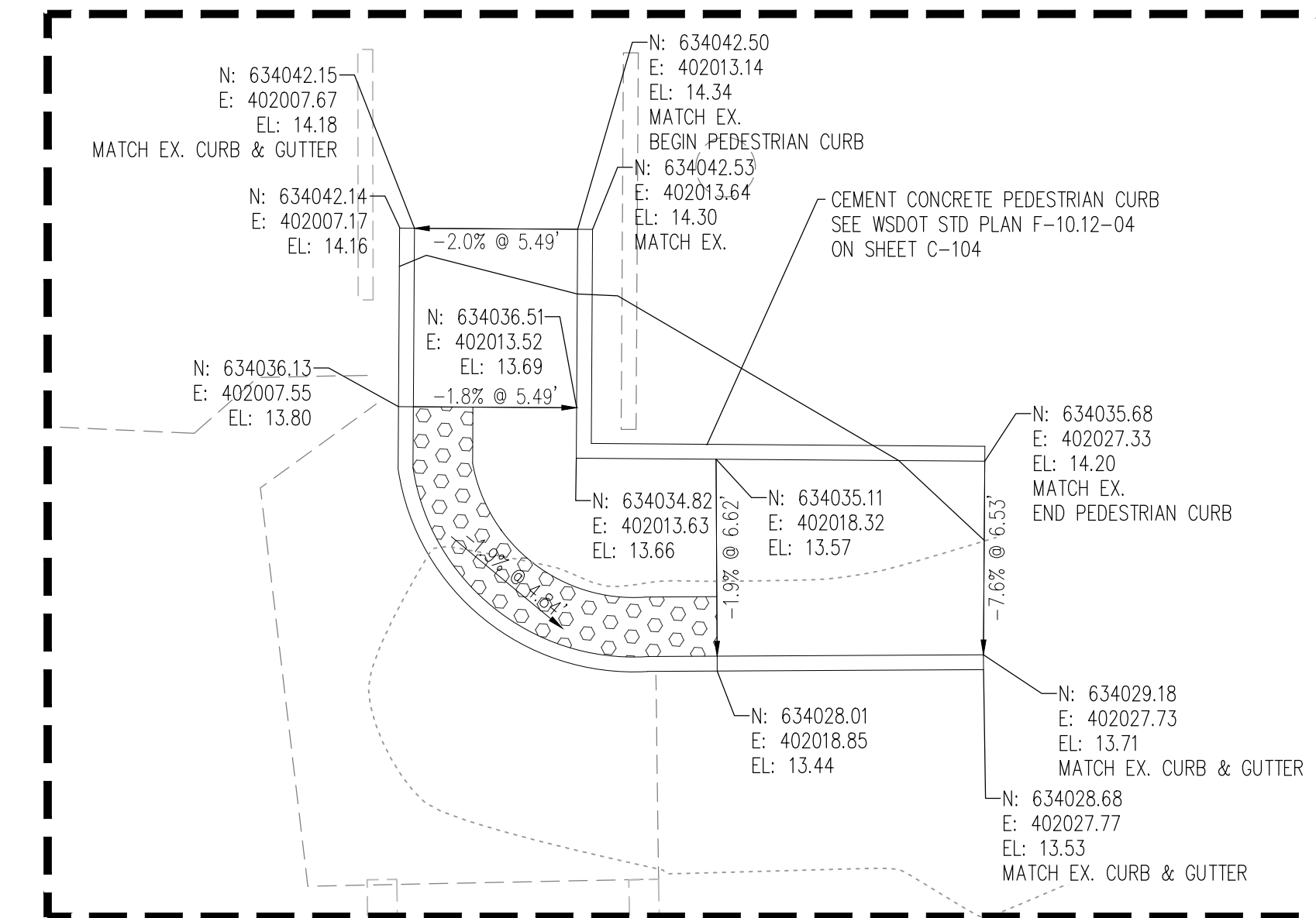


ADA RAMP 4 ENLARGEMENT

1" = 5'

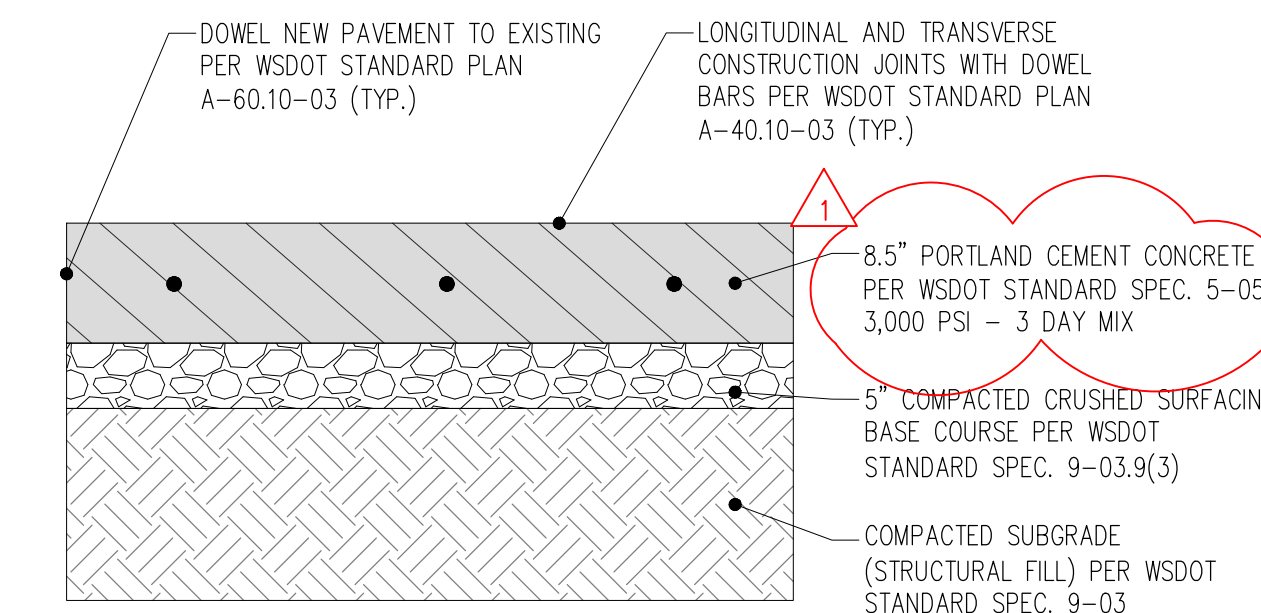
GENERAL NOTES:

- RAMPS 1-4 ARE ALL PERPENDICULAR CURB RAMP TYPE C. THEY ALL SHALL COMPLY WITH CITY OF OLYMPIA STD DWG NO. 4-12C.
- RAMP 5 IS A PARALLEL CURB RAMP TYPE A. IT ALL SHALL COMPLY WITH CITY OF OLYMPIA STD DWG NO. 4-12D.



ADA RAMP 5 ENLARGEMENT

1" = 5'



CEMENT CONCRETE PAVEMENT

NTS

NOTES

- MATERIALS, PREPARATION, AND PLACEMENT OF PAVEMENTS, BASES AND SUBGRADES FOR THIS PROJECT SHALL BE IN ACCORDANCE WITH THE REQUIREMENTS AND SPECIFICATIONS OF THE GEOTECHNICAL SUBSURFACE DATA AND THE MOST CURRENT WSDOT STANDARD SPECIFICATIONS.



8730 TALLON LANE NE, SUITE 200, LACEY, WA 98516  
P: 360.352.1465  
SCJALLIANCE.COM

SHEET TITLE: SITE IMPROVEMENT ENLARGEMENTS

PROJECT NAME: OLYMPIA TRANSIT CENTER NORTH SITE IMPROVEMENTS OLYMPIA, WA

DESIGNER: K. GANS

DRAWN BY: K. GANS

APPROVED BY: W. HOLM

DATE: JULY, 2023

JOB NO: 22-000842

DRAWING FILE NO: 22-000842\_SP-02

DRAWING NO: C-103

SHEET NO: 7 OF 9



DESIGNER: K. GANS

DRAWN BY: K. GANS

APPROVED BY: W. HOLM

DATE: JULY, 2023

JOB NO: 22-000842

DRAWING FILE NO: 22-000842\_SP-02

DRAWING NO: C-103

SHEET NO: 7 OF 9