



# Procurement Planning

# Growth Planning

Goal 1 –Assess the transportation needs of our community throughout the Public Transportation Benefit Area.

*End Policy - Intercity Transit Authority, staff, and the public will have access to clear and comprehensive information related to the transportation needs of our Public Transportation Benefit Area.*



# Consulting Services Contracts





Penn Ave & 7th St

## Real Time Departures

LINE	DESTINATION	DEPT. ESTIMATED TIME
77	East Liberty / Penn Hills	3 min
86	East Liberty / Homewood	3 min
88	East Liberty / Bakery Square	7 min
91	Wareworks / VA Hospital	8 min
77	East Liberty / Penn Hills	7:26p
86	East Liberty / Homewood	7:32p
77	East Liberty / Penn Hills	7:36p
88	East Liberty / Bakery Square	7:52p

**Rider Alert**  
 Bike to Work Day, Thursday, June 15  
 On this Bike to Work Day, the transit agency will offer free rides to buslines for all employees.

Penn Ave & 7th St

## Schedules

**77**  
 East Liberty / Penn Hills

MONDAY-FRIDAY			SATURDAY
AM	PM	PM	PM
6:44	11:07	7:40	6:30
6:56	11:19	8:52	6:42
7:08	PM	9:04	6:54
7:20	11:31	9:16	7:06
7:32	11:43	9:28	7:18
7:44	11:55	9:40	7:30
7:56	12:07	9:52	7:42
8:08	12:19	10:04	7:54
8:20	12:31	10:16	8:06
8:32	12:43	10:28	8:18
8:44	12:55	10:40	8:30
8:56	1:07	10:52	8:42
9:08	1:19	11:04	8:54
9:20	1:31	11:16	9:06
9:32	1:43	11:28	9:18
9:44	1:55	11:40	9:30
9:56	2:07	11:52	9:42
10:08	2:19	12:04	9:54
10:20	2:31	12:16	10:06
10:32	2:43	12:28	10:18
10:44	2:55	12:40	10:30
10:56	3:07	12:52	10:42
11:08	3:19	1:04	10:54
11:20	3:31	1:16	11:06
11:32	3:43	1:28	11:18
11:44	3:55	1:40	11:30
11:56	4:07	1:52	11:42
12:08	4:19	2:04	11:54
12:20	4:31	2:16	12:06
12:32	4:43	2:28	12:18
12:44	4:55	2:40	12:30
12:56	5:07	2:52	12:42
1:08	5:19	3:04	12:54
1:20	5:31	3:16	1:06
1:32	5:43	3:28	1:18
1:44	5:55	3:40	1:30
1:56	6:07	3:52	1:42
2:08	6:19	4:04	1:54
2:20	6:31	4:16	2:06
2:32	6:43	4:28	2:18
2:44	6:55	4:40	2:30
2:56	7:07	4:52	2:42
3:08	7:19	5:04	2:54
3:20	7:31	5:16	3:06
3:32	7:43	5:28	3:18
3:44	7:55	5:40	3:30
3:56	8:07	5:52	3:42
4:08	8:19	6:04	3:54
4:20	8:31	6:16	4:06
4:32	8:43	6:28	4:18
4:44	8:55	6:40	4:30
4:56	9:07	6:52	4:42
5:08	9:19	7:04	4:54
5:20	9:31	7:16	5:06
5:32	9:43	7:28	5:18
5:44	9:55	7:40	5:30
5:56	10:07	7:52	5:42
6:08	10:19	8:04	5:54
6:20	10:31	8:16	6:06
6:32	10:43	8:28	6:18
6:44	10:55	8:40	6:30
6:56	11:07	8:52	6:42
7:08	11:19	9:04	6:54
7:20	11:31	9:16	7:06
7:32	11:43	9:28	7:18
7:44	11:55	9:40	7:30
7:56	12:07	9:52	7:42
8:08	12:19	10:04	7:54
8:20	12:31	10:16	8:06
8:32	12:43	10:28	8:18
8:44	12:55	10:40	8:30
8:56	1:07	10:52	8:42
9:08	1:19	11:04	8:54
9:20	1:31	11:16	9:06
9:32	1:43	11:28	9:18
9:44	1:55	11:40	9:30
9:56	2:07	11:52	9:42
10:08	2:19	12:04	9:54
10:20	2:31	12:16	10:06
10:32	2:43	12:28	10:18
10:44	2:55	12:40	10:30
10:56	3:07	12:52	10:42
11:08	3:19	1:04	10:54
11:20	3:31	1:16	11:06
11:32	3:43	1:28	11:18
11:44	3:55	1:40	11:30
11:56	4:07	1:52	11:42
12:08	4:19	2:04	11:54
12:20	4:31	2:16	12:06
12:32	4:43	2:28	12:18
12:44	4:55	2:40	12:30
12:56	5:07	2:52	12:42
1:08	5:19	3:04	12:54
1:20	5:31	3:16	1:06
1:32	5:43	3:28	1:18
1:44	5:55	3:40	1:30
1:56	6:07	3:52	1:42
2:08	6:19	4:04	1:54
2:20	6:31	4:16	2:06
2:32	6:43	4:28	2:18
2:44	6:55	4:40	2:30
2:56	7:07	4:52	2:42
3:08	7:19	5:04	2:54
3:20	7:31	5:16	3:06
3:32	7:43	5:28	3:18
3:44	7:55	5:40	3:30
3:56	8:07	5:52	3:42
4:08	8:19	6:04	3:54
4:20	8:31	6:16	4:06
4:32	8:43	6:28	4:18
4:44	8:55	6:40	4:30
4:56	9:07	6:52	4:42
5:08	9:19	7:04	4:54
5:20	9:31	7:16	5:06
5:32	9:43	7:28	5:18
5:44	9:55	7:40	5:30
5:56	10:07	7:52	5:42
6:08	10:19	8:04	5:54
6:20	10:31	8:16	6:06
6:32	10:43	8:28	6:18
6:44	10:55	8:40	6:30
6:56	11:07	8:52	6:42
7:08	11:19	9:04	6:54
7:20	11:31	9:16	7:06
7:32	11:43	9:28	7:18
7:44	11:55	9:40	7:30
7:56	12:07	9:52	7:42
8:08	12:19	10:04	7:54
8:20	12:31	10:16	8:06
8:32	12:43	10:28	8:18
8:44	12:55	10:40	8:30
8:56	1:07	10:52	8:42
9:08	1:19	11:04	8:54
9:20	1:31	11:16	9:06
9:32	1:43	11:28	9:18
9:44	1:55	11:40	9:30
9:56	2:07	11:52	9:42
10:08	2:19	12:04	9:54
10:20	2:31	12:16	10:06
10:32	2:43	12:28	10:18
10:44	2:55	12:40	10:30
10:56	3:07	12:52	10:42
11:08	3:19	1:04	10:54
11:20	3:31	1:16	11:06
11:32	3:43	1:28	11:18
11:44	3:55	1:40	11:30
11:56	4:07	1:52	11:42
12:08	4:19	2:04	11:54
12:20	4:31	2:16	12:06
12:32	4:43	2:28	12:18
12:44	4:55	2:40	12:30
12:56	5:07	2:52	12:42
1:08	5:19	3:04	12:54
1:20	5:31	3:16	1:06
1:32	5:43	3:28	1:18
1:44	5:55	3:40	1:30
1:56	6:07	3:52	1:42
2:08	6:19	4:04	1:54
2:20	6:31	4:16	2:06
2:32	6:43	4:28	2:18
2:44	6:55	4:40	2:30
2:56	7:07	4:52	2:42
3:08	7:19	5:04	2:54
3:20	7:31	5:16	3:06
3:32	7:43	5:28	3:18
3:44	7:55	5:40	3:30
3:56	8:07	5:52	3:42
4:08	8:19	6:04	3:54
4:20	8:31	6:16	4:06
4:32	8:43	6:28	4:18
4:44	8:55	6:40	4:30
4:56	9:07	6:52	4:42
5:08	9:19	7:04	4:54
5:20	9:31	7:16	5:06
5:32	9:43	7:28	5:18
5:44	9:55	7:40	5:30
5:56	10:07	7:52	5:42
6:08	10:19	8:04	5:54
6:20	10:31	8:16	6:06
6:32	10:43	8:28	6:18
6:44	10:55	8:40	6:30
6:56	11:07	8:52	6:42
7:08	11:19	9:04	6:54
7:20	11:31	9:16	7:06
7:32	11:43	9:28	7:18
7:44	11:55	9:40	7:30
7:56	12:07	9:52	7:42
8:08	12:19	10:04	7:54
8:20	12:31	10:16	8:06
8:32	12:43	10:28	8:18
8:44	12:55	10:40	8:30
8:56	1:07	10:52	8:42
9:08	1:19	11:04	8:54
9:20	1:31	11:16	9:06
9:32	1:43	11:28	9:18
9:44	1:55	11:40	9:30
9:56	2:07	11:52	9:42
10:08	2:19	12:04	9:54
10:20	2:31	12:16	10:06
10:32	2:43	12:28	10:18
10:44	2:55	12:40	10:30
10:56	3:07	12:52	10:42
11:08	3:19	1:04	10:54
11:20	3:31	1:16	11:06
11:32	3:43	1:28	11:18
11:44	3:55	1:40	11:30
11:56	4:07	1:52	11:42
12:08	4:19	2:04	11:54
12:20	4:31	2:16	12:06
12:32	4:43	2:28	12:18
12:44	4:55	2:40	12:30
12:56	5:07	2:52	12:42
1:08	5:19	3:04	12:54
1:20	5:31	3:16	1:06
1:32	5:43	3:28	1:18
1:44	5:55	3:40	1:30
1:56	6:07	3:52	1:42
2:08	6:19	4:04	1:54
2:20	6:31	4:16	2:06
2:32	6:43	4:28	2:18
2:44	6:55	4:40	2:30
2:56	7:07	4:52	2:42
3:08	7:19	5:04	2:54
3:20	7:31	5:16	3:06
3:32	7:43	5:28	3:18
3:44	7:55	5:40	3:30
3:56	8:07	5:52	3:42
4:08	8:19	6:04	3:54
4:20	8:31	6:16	4:06
4:32	8:43	6:28	4:18
4:44	8:55	6:40	4:30
4:56	9:07	6:52	4:42
5:08	9:19	7:04	4:54
5:20	9:31	7:16	5:06
5:32	9:43	7:28	5:18
5:44	9:55	7:40	5:30
5:56	10:07	7:52	5:42
6:08	10:19	8:04	5:54
6:20	10:31	8:16	6:06
6:32	10:43	8:28	6:18
6:44	10:55	8:40	6:30
6:56	11:07	8:52	6:42
7:08	11:19	9:04	6:54
7:20	11:31	9:1	

Goal 2 - Provide outstanding customer service.

*End Policy – Customers, staff and the broader community will report a high level of satisfaction.*





# Bus Stop Pads

# OTC Pedestrian Crossing Repairs and Replacements





Janitorial  
Services

---

INTERCITY  
TRANSIT





# Landscape Services

Goal 3 - Maintain a safe and secure operating system.

*End Policy – Focus on the continual improvement for the safety and security of all customers, employees and facilities.*



INTERCITY  
TRANSIT

# Pattison Expansion Project Phase IV South Parcel





# Driver Barriers

---



# Security Guard Services



**INTERCITY**  
TRANSIT



# Catch Basin Cleaning Services

INTERcity  
TRANSIT

# Centennial Station Repairs



Goal 4 - Provide responsive transportation options within financial limitations.

*End Policy - Customers and staff will have access to programs and services that benefit and promote community sustainability, focused on serving the mobility needs and demands of our community.*



**INTERcity**  
**TRANSIT**

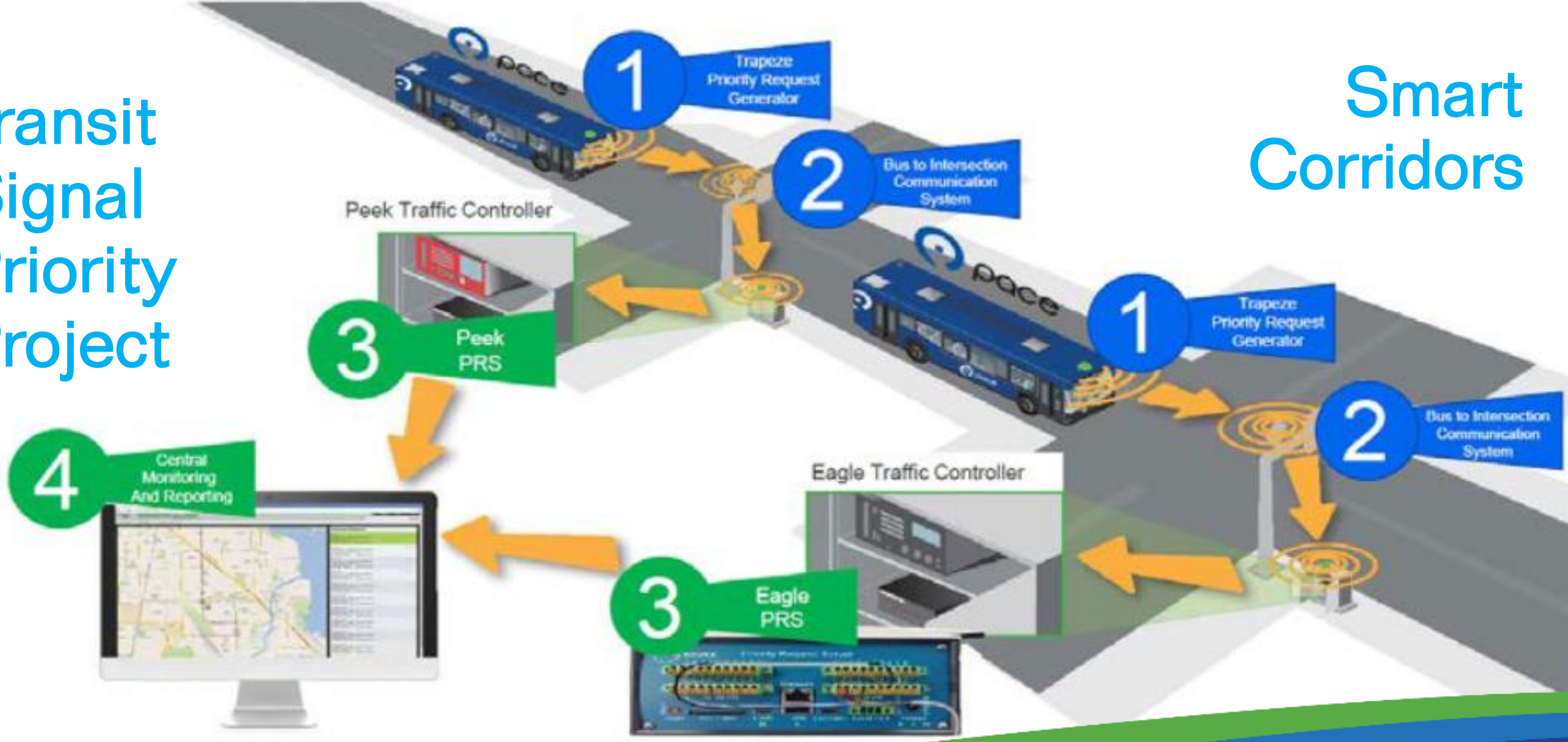


Via Mobility LLC  
DAL Scheduling  
Technology



# Transit Signal Priority Project

# Smart Corridors



# East Martin Way Gateway Roundabout



Goal 5 – Integrate sustainability into all agency decisions and operations to lower social and environmental impact to enhance our community and support the Thurston County Regional Climate Mitigation Plan.

*End Policy - Resources will be used efficiently to minimize the negative impact on the environment and the community and, to the extent possible efforts will be pursued that integrate or otherwise align with broader sustainability goals.*



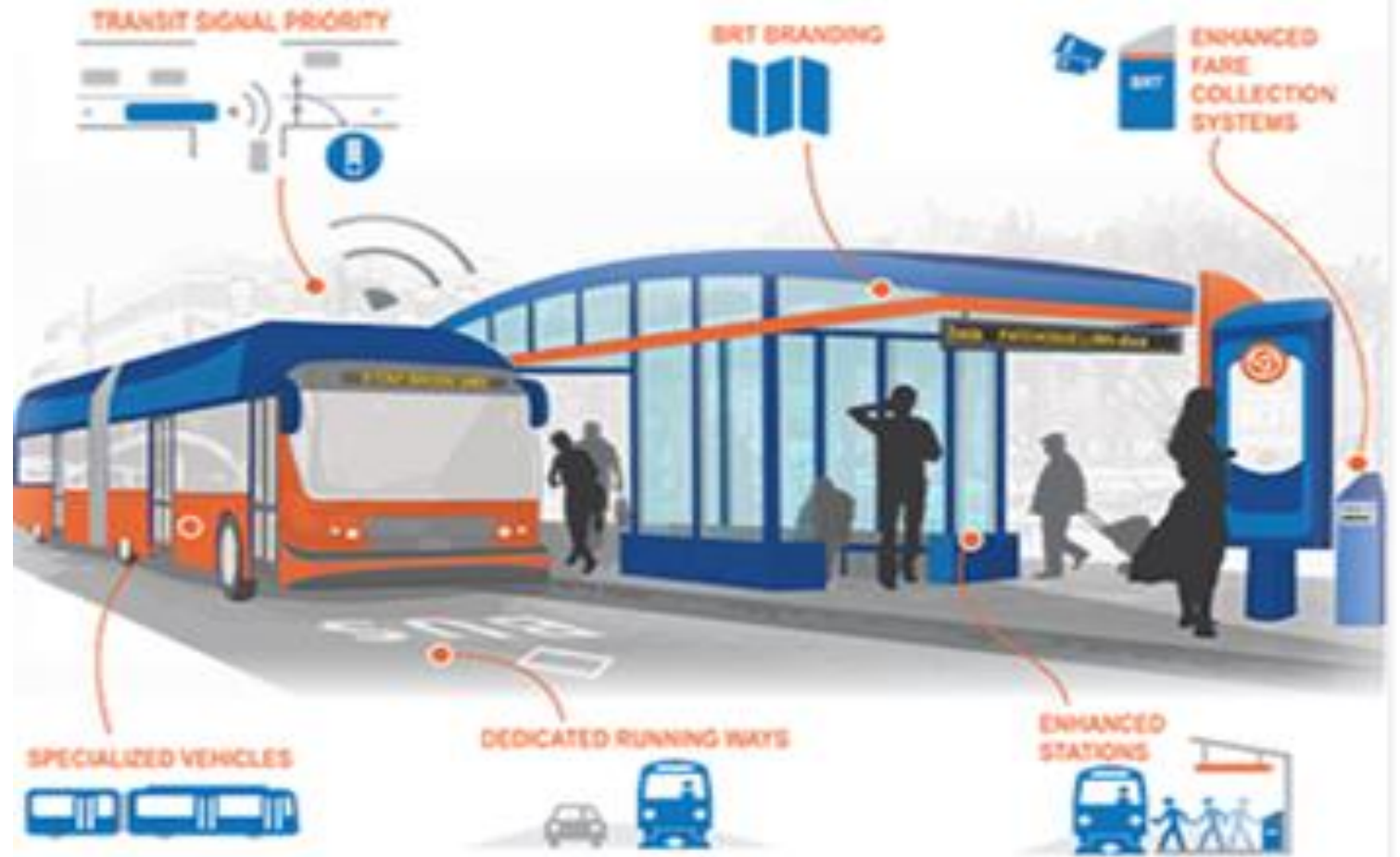


Goal 6 – Encourage use of our services, reduce barriers to access and increase ridership.

*End Policy – Educate and encourage community members to explore, appreciate and utilize the benefits of our services and programs while making the system easier to use.*



# Bus Rapid Transit (BRT)



Goal 7 – Build partnerships to identify and implement innovative solutions that address mobility needs, access, and equity, as a service provider and as an employer.

*End Policy – Work with governmental entities, educational institutions, businesses, not-for-profit community partners and customers to facilitate great mobility options as well as educational and socio-economic opportunities in our community.*



**INTERCITY**  
**TRANSIT**



# Martin Way Park & Ride Improvements



POTENTIAL FUTURE EDGE OF PAVEMENT OF THIRD LANE TO ACCOMMODATE RAMP METER.

I-5 NB ON-RAMP

I-5 NB

150

Goal 8 – Integrate resiliency into all agency decisions to anticipate, plan, and adapt given the critical functions of transit operations.

*End Policy – Promote community, organizational and individual resiliency.*





ERP

# Enterprise Resource Planning



# General Legal Services

A person in a dark suit and tie is shown from the chest up, pointing their right index finger towards a glowing, semi-transparent gear icon. The gear is part of a vertical chain of three similar gears. The background is a blurred office setting with a bright blue light flare on the right side. The text 'FACILITY MANAGEMENT' is written in a bold, white, sans-serif font across the center of the image.

# FACILITY MANAGEMENT

**INTERcity**  
TRANSIT



# Marketing Communication Services Contract



Vehicle  
Wraps

INTERcity  
TRANSIT

Questions?